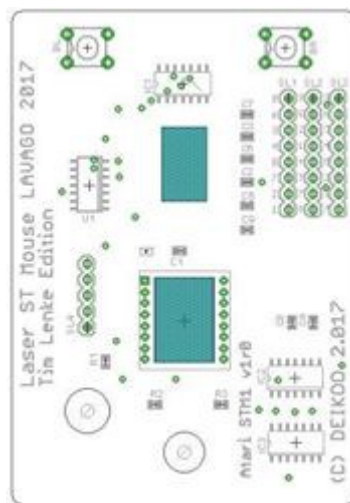


Laser Maus Board for the original ATARI STM1 Mouse

Connections



The board has three ports that fits most original Atari mouse cables.
Some models require the connections to be manually inserted or soldered.

If none of the connections fits, the original Atari mouse cable should be measured with a multimeter
will be used to determine on which assignment which port is located.

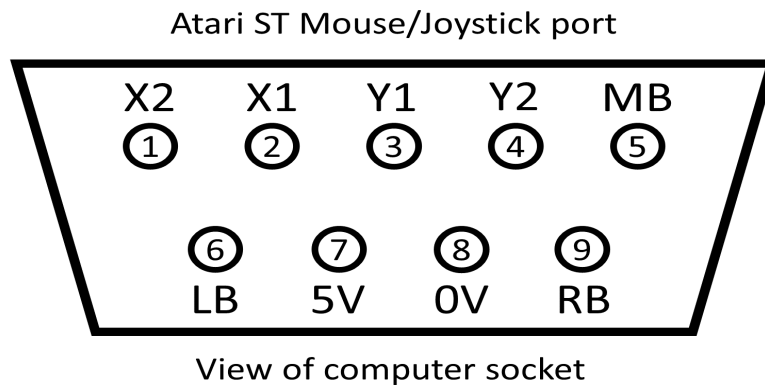
If a wrong assignment is connected by mistake, this will not harm the board, it will only lead to no
or a faulty function.

The 3 different connections on the Laser board:

SL1:	SL2:	SL:3
9	9	9
6	6	6
3	2	3
4	1	4
8	4	8
7	3	2
2	7	1
1	8	7

The SL4 connector is for an optional Bluetooth adapter.

Original mouse connection on Atari ST / STE / Falcon / TT:



For connecting the pins and testing the mouse, the laser lens must be placed under the board.

If this does not hold it can be fixed with hot glue.

Only with the laser lens, the board can be tested for function.

© LAVAGO GbR – Germany -2018

Burgdorfer Str. 2
30989 Gehrden
info@lavago.de
www.LAVAGO.de